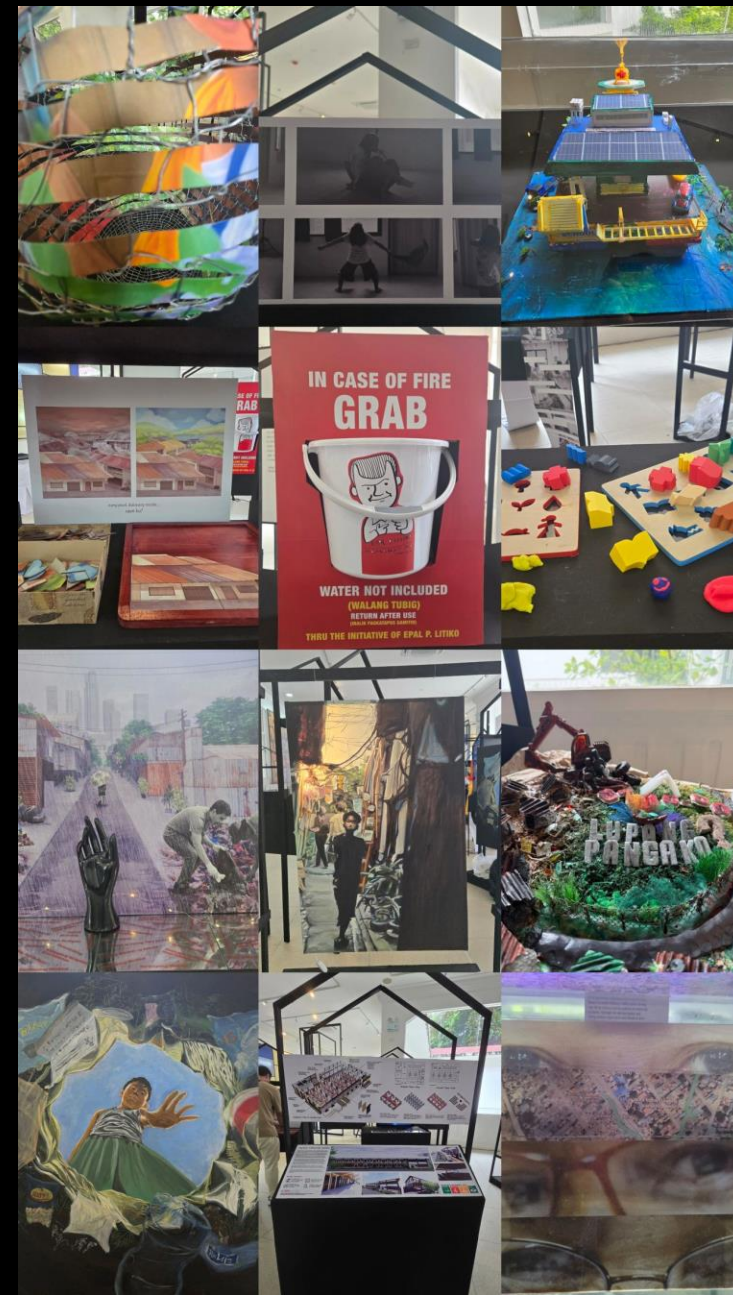


Rehearsing Ethical Futures: Speculative Scenarios for Inclusive Global Health Partnerships

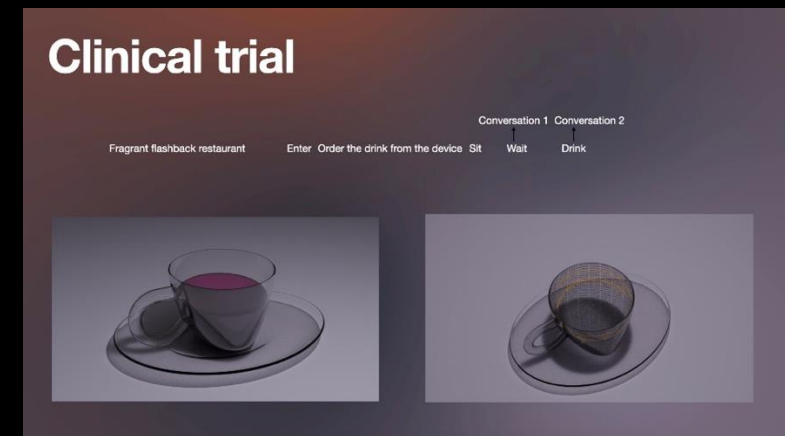
Mona Nasser, Pamela Cajilig



We co-create stories of alternate futures that embraces the ideas, cultures and traditions of different cultures and disciplines and attempts to integrate the uncertainty of scientific knowledge.



Evolution of the Mars Mission story 2018 -2021



TRAPPIST-1 System



Illustration

CREDIT: NASA/JPL-Caltech/R. Hurt, T. Pyle (IPAC)

Evolution of the Trappist story 2020 -2024



Klipaki

Task 1 – Have a discussion and outline what you think about the “challenge”. Do you see it as a problem? If yes, what type of “challenge”? Health? Language? Social? Political? etc Do you think any aspect of it needs to be addressed?

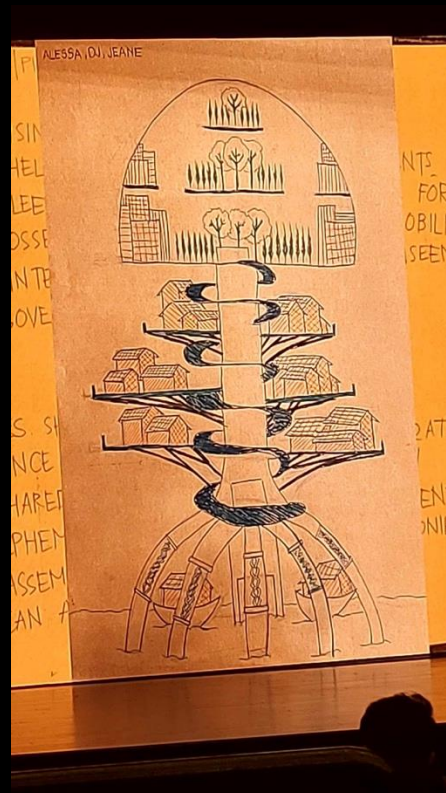
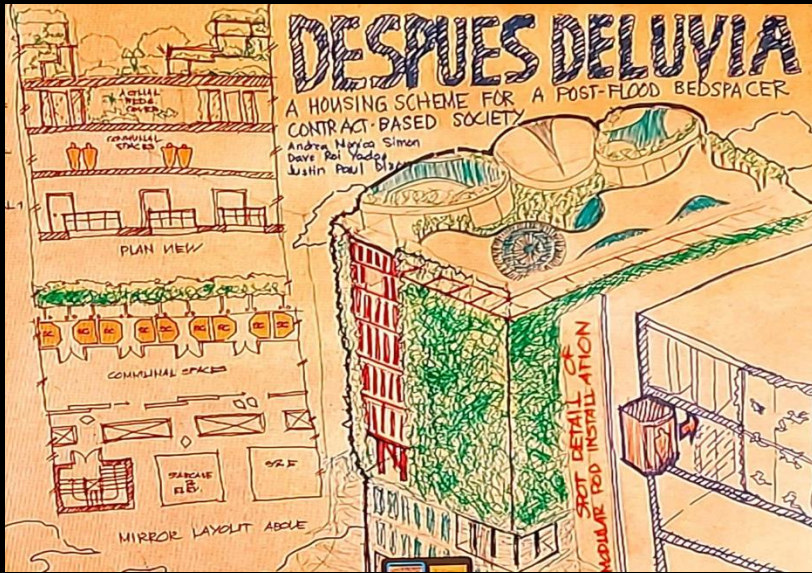
problems **Evolution point** **is it one language or multiple?** **can you language overload?**

Task 2 – Come up with three new words that might exist in your community/planet? You only have to develop a concept for a word rather than the word itself for example in middle east, there is a word “gheir” which refers to a feeling of protection and possession men have over women or children. The word “kapua” in filipino refers to the unity of self and others. In Japan, there are several words to describe the concept of empty unlike some other languages. The task is to come up with concepts but feel free to also make up a word for it if you would enjoy doing that

community interconnectedness **is it one language or multiple?** **can you language overload?**

Task 3 – As you have might have noticed during the recent covid19 pandemic, it is difficult to manage a health problem that we do not fully understand. We cannot wait to know all the facts before we try to provide people with some kind of intervention or management strategy for the problem. The key is to have good systems in place that are able to run controlled studies whether our strategies works or not along with managing the situation. For example, this was not the case in most countries during covid19 pandemic. A lot of countries have implemented a range of policies around masking and lock down but we still do not have good evidence whether they work or in what shape and form are they most effective as there is very little good quality data collected.





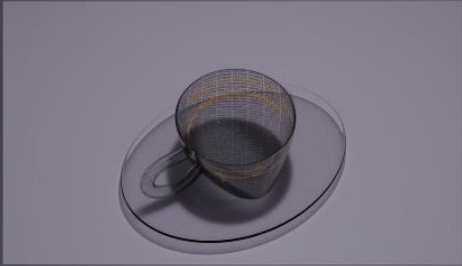
Approach and Methodology

- MFL does not predict futures - it rehearses them.
- Uses science fiction, immersive design, and co-authorship to test ethical dynamics in partnerships,
- We use scenarios that embed “tensions” in the scenarios: extreme climates, unusual pandemics, unequal engagement of stakeholders, Communications challenges



Clinical trial

Fragrant flashback restaurant Enter Order the drink from the device Sit Conversation 1 Conversation 2 Wait Drink



A love letter from a merger

In the cradle of your celestial realm, I reside,
A fortunate soul merged with you, side by side.
From within your captivating embrace, I proclaim,
My love for you, a flame that never wanes.
Oh, how I cherish the privilege to dwell in your domain,
To witness the wonders that within you remain.
With each passing day, a deeper bond is formed,
As your essence and mine intertwine, transformed.

Through your grace, I have profound insight,
A deeper understanding, an eternal light.
Weaving through the fabric of your inner world,
I explore the depths, my spirit unfurled.

Yet, amidst the splendour, shadows attempt to deceive,
Falsely claiming the connection they believe.
But fear not, for I see through,
Only genuine love and devotion to you.

Under the night's tranquil shield, we find solace,
A sanctuary of safety from cosmic menace.
In the soft glow of distant stars, we abide,
Together, in harmony, our love resides.

The Fart that led to a love story

“The Underwater Colonies”



“Yes, I can kill the sultan”. Joniu and Hilgea clad in their specially designed suits, stepped into the water vapour plume that would propel them to the surface for an important expedition. Despite Joniu's tendency to shout unusual sentences as a form of humour during such maneuvers, Hilgea found herself startled each time. His playful banter, however, belied the seriousness of their mission: to conduct biannual audits of the surface ice, ensuring it remained unaltered by human activities from the underground habitat.

Evolution of the Trappist story 2020 -2024



Klipaki

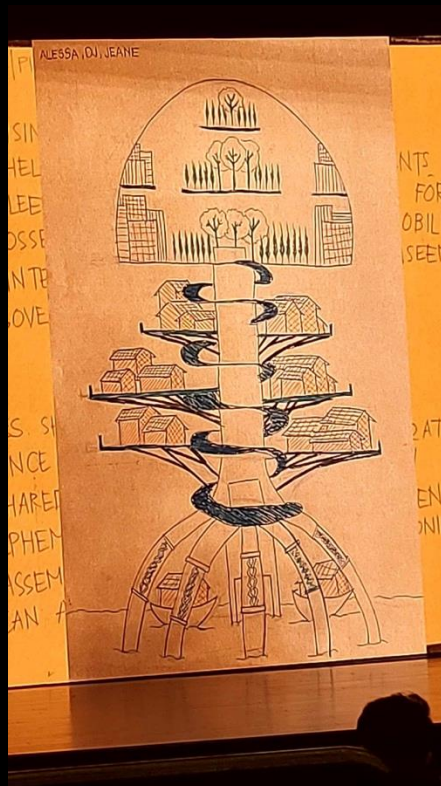
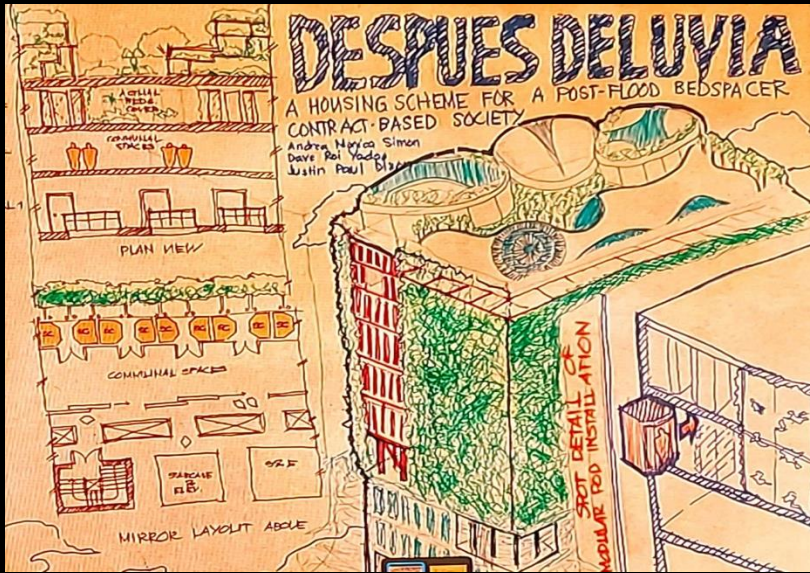
Task 1 – Have a discussion and outline what you think about the “challenge”. Do you see it as a problem? If yes, what type of “chilling”? Health? Language? Social? Political? etc Do you think any aspect of it needs to be “Agitated”?

problems Evolution point Is it one language or multiple? can you language overload?

Task 2 – Come up with three new words that might exist in your community/planet? You only have to develop a concept for a word rather than the word itself for example in middle east, there is a word “gheirai” which refers to a feeling of protection and possession men have over women or children. The word “kapua” in filipino refers to the unity of self and others. In Japan, there are several words to describe the concept of empty unlike some other languages. The task is to come up with concepts but feel free to also make up a word for it if you would enjoy doing that

Task 3 – As you have might have noticed during the recent covid19 pandemic, it is difficult to manage a health problem that we do not fully understand. We cannot wait to know all the facts before we try to provide people with some kind of intervention or management strategy for the problem. The key is to have good systems in place that are able to run controlled studies whether our strategies works or not along with managing the situation. For example, this was not the case in most countries during covid19 pandemic. A lot of countries have implemented a range of policies around masking and lock down but we still do not have good evidence whether they work or in what shape and form are they most effective as there is very little good quality data collected.





Recommendation 1: Embed Ethical Rehearsal

- Use speculative and participatory methods to explore ethical tensions before crises occur.
- Build readiness, empathy, and accountability into partnership cycles.

Recommendation 2: Co-develop Ethical Toolkits

- Develop context-responsive toolkits like MELT and UniCDent.
- Co-create guidance with stakeholders to reflect cultural and linguistic diversity.

Any questions?

mona.nasser@plymouth.ac.uk